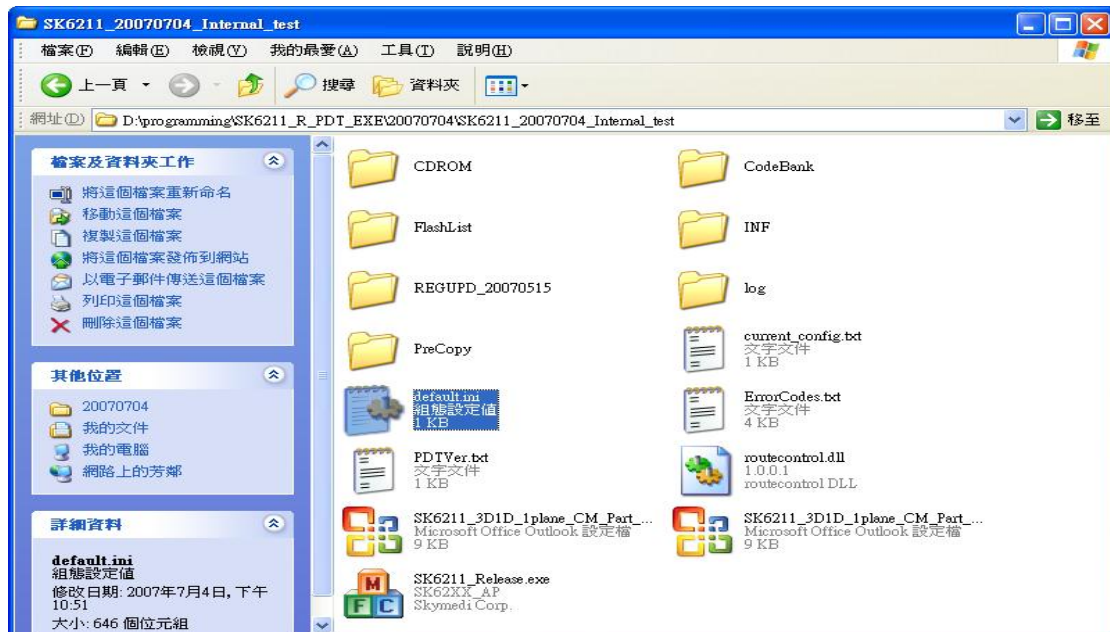
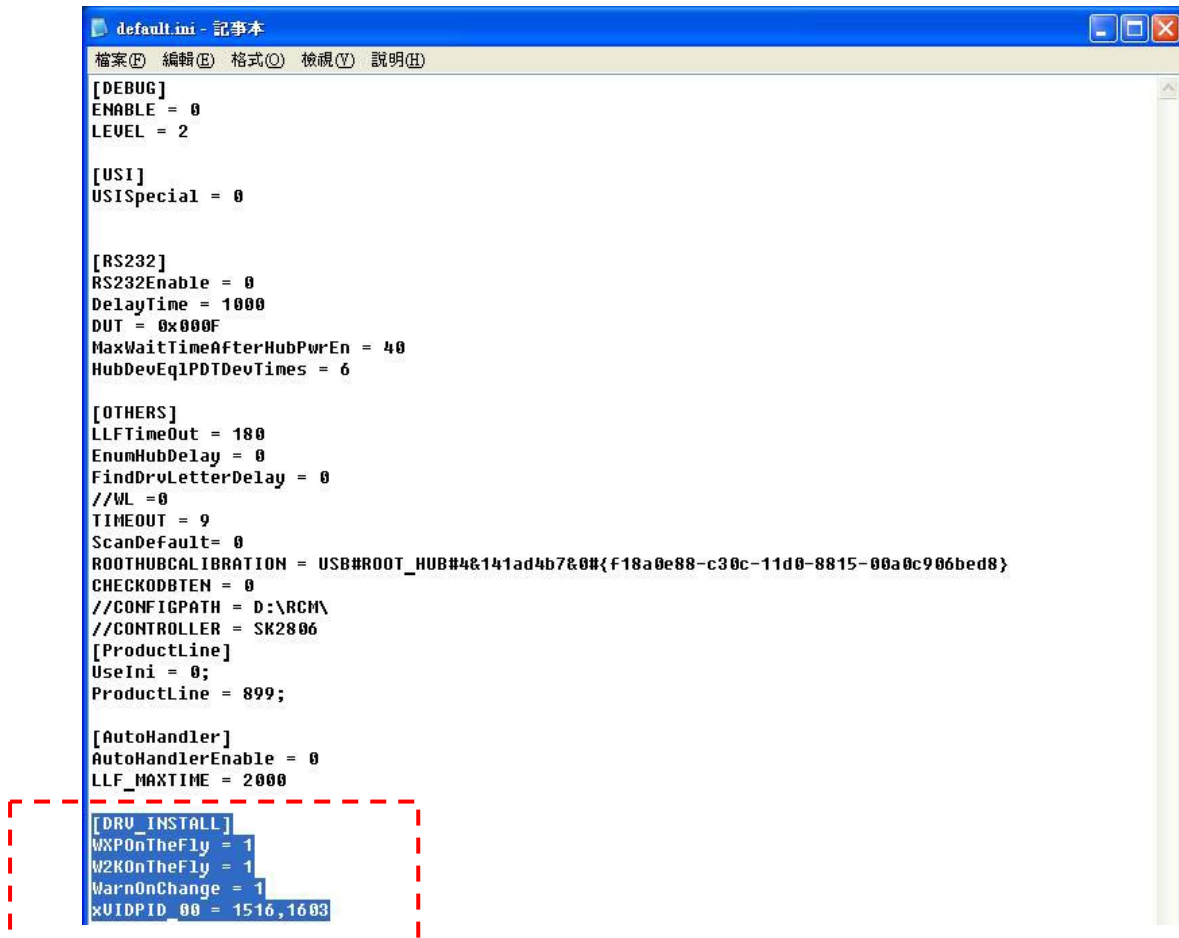


## PDT Automatically Launching Driver Setting

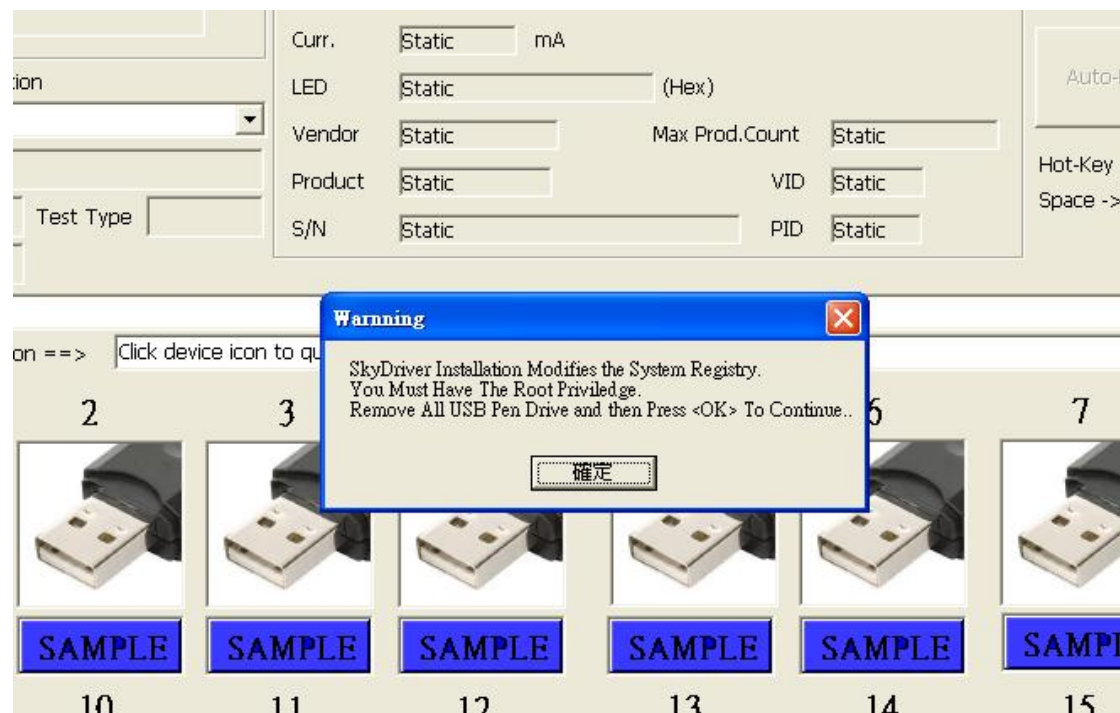
1. Select “default.ini” and open it



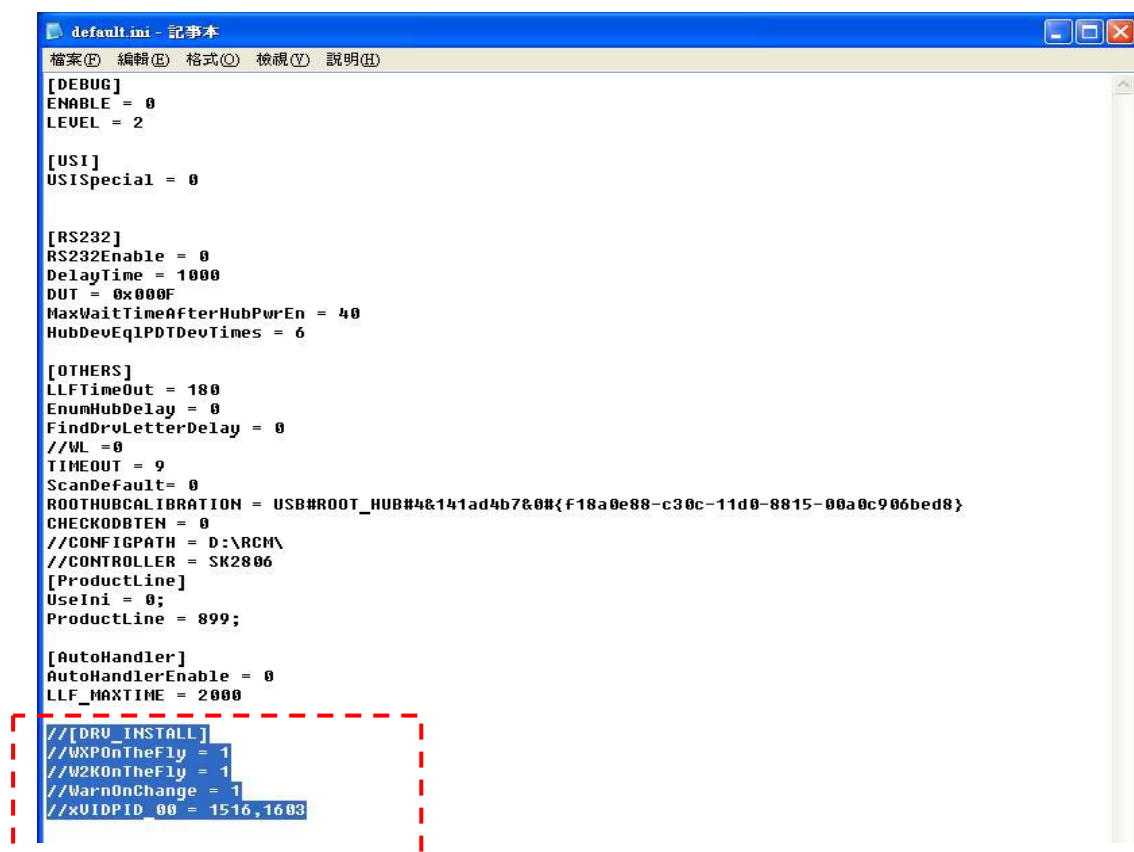
2. add selected part value into “default.ini”, PDT will auto launch Driver install as following:



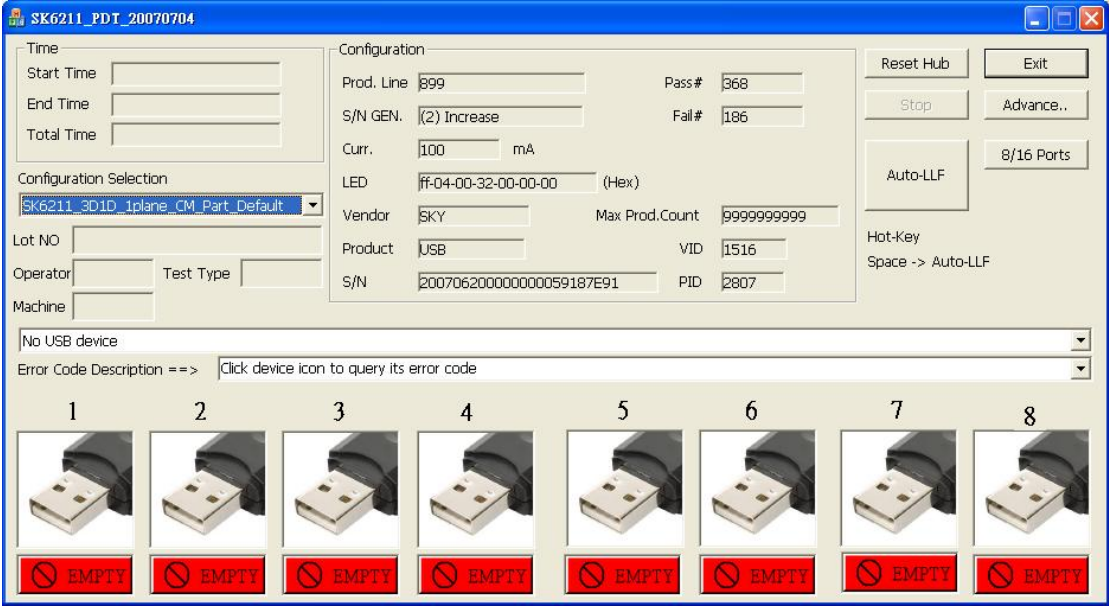
4. While Launching PDT it will popup a Dialog to install driver automatically, (Notice: you must open your privilege of your registry files, take the reference of “Registry\_ 權限開啓.pdf”)



5. if user wants to turn off automatically install driver function, just remark or delete select part value in the “Default.ini”

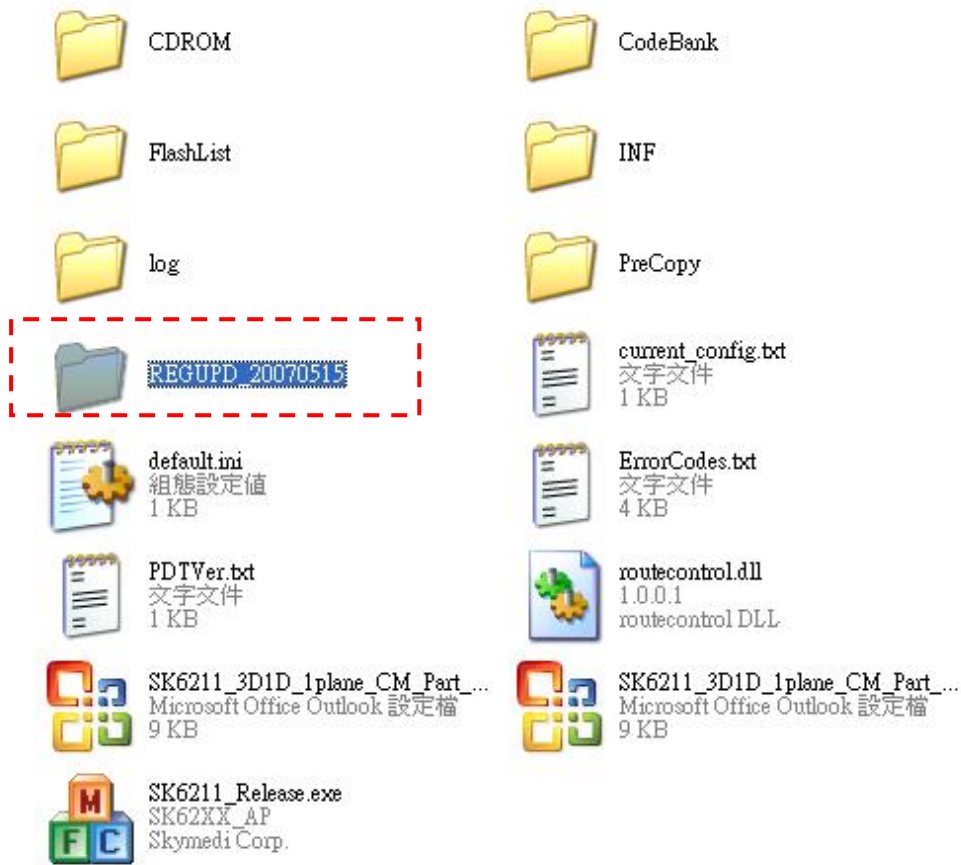


6. Press PDT Icon to run the PDT program and it won't do auto-install driver operation.

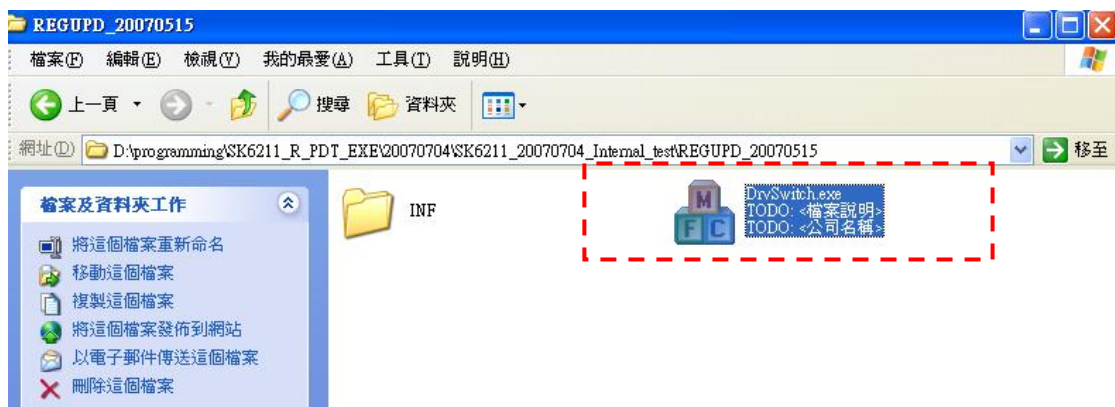


## PDT Driver Select Tool

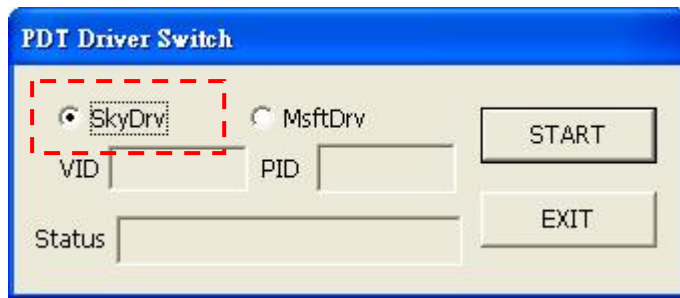
1. Enter “REGUPD\_20070515” folder at PDT folder:



2. Click “DrvSwitch.exe” to launch the program



3. Choose “SkyDrv” radio button and press “START” to switch our driver.



4. Choose “MsftDrv” radio button and press “START” to switch back to default Microsoft Driver

